

AW GROENEWALD

The Palette of Memory

A RARE PRESENTATION OF
PREVIOUSLY UNSEEN WORKS
PRESENTED BY



Contents

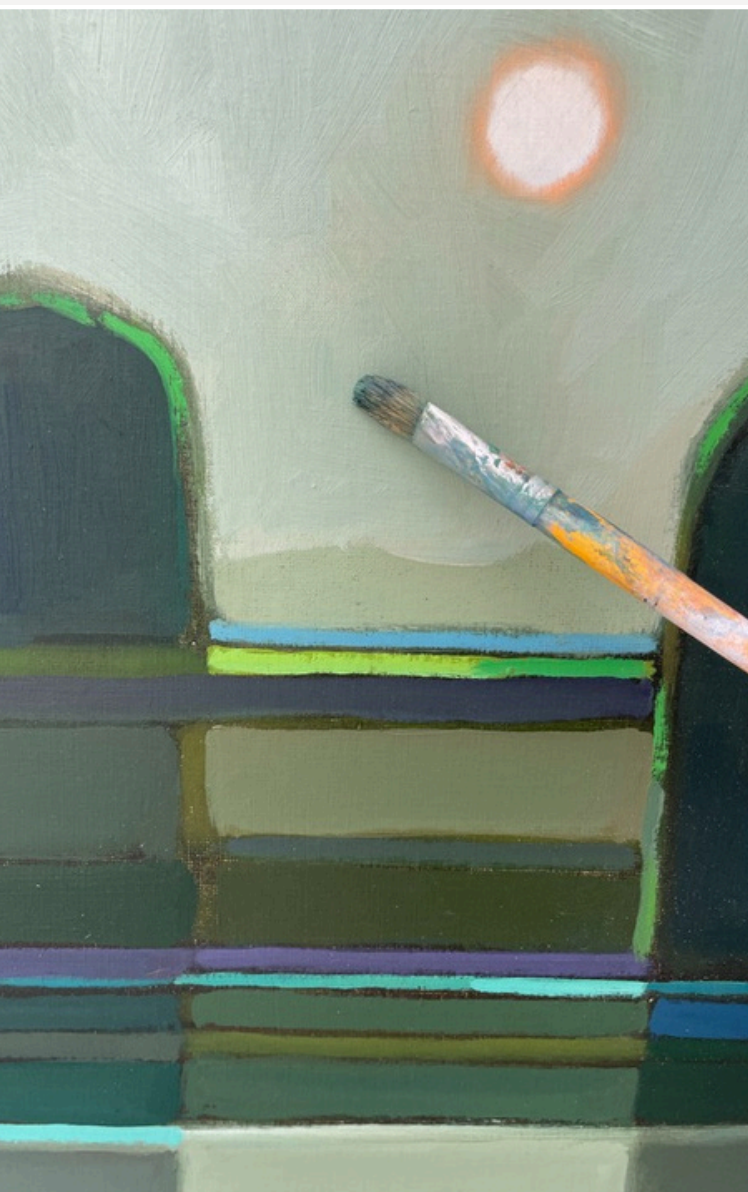
- THE QUIET ARCHIVE
- NOTABLE EXHIBITIONS & HIGHLIGHTS
- THE CURATOR
- THE WATERCOLOUR COLLECTION
- THE PASTEL COLLECTION
- THE OIL COLLECTION
- CONTACT



The Quiet Archive

André Wilhelm Groenewald (b.1941) occupies a quietly compelling position within South African art history: a painter of rare technical fluency whose oeuvre has unfolded largely outside the mechanisms of public acclaim.

Born in Cape Town and exhibiting professionally from the age of seventeen, Groenewald's early promise was confirmed through formal training at the Michaelis School of Fine Art in 1959, where he studied within a lineage shaped by figures such as Lippy Lipshitz, Carl Büchner and Maurice van Essche. Yet, unlike many of his contemporaries whose careers were shaped by institutional visibility and critical discourse, Groenewald's artistic life developed in sustained privacy—resulting in an expansive body of work produced with remarkable consistency over more than six decades.



Cape Town | 1960

His paintings are anchored in the language of traditional still life and landscape, but resist straightforward categorisation. Rather than recording specific topographies, Groenewald constructs imagined, tranquil worlds—at once intimate and distant—where light becomes atmosphere and colour becomes structure. A signature palette of Phthalo and Prussian greens, cobalt, turquoise and Viridian dominates his compositions, creating an immediately recognisable chromatic identity. This persistent tonal vocabulary, repeated across decades, gives his oeuvre the coherence of a lifelong visual philosophy: a disciplined exploration of calm, space, and painterly illusion.

Groenewald's importance lies not only in his longevity, but in the way his practice reflects a parallel history of South African art - one that developed beyond the mainstream narrative of political urgency and public spectacle. His work speaks instead to a quieter modernism, rooted in observation, and the poetic potential of the medium itself. In this sense, Groenewald's artworks function as an alternative archive: a sustained meditation on beauty, solitude and interior geography, created with unwavering dedication. The rediscovery of his work is therefore not merely a market event, but a significant cultural moment - an opportunity to reinsert a neglected master into the historical record and to recognise the depth of a practice that has patiently waited, for decades, to be seen.

Notable Exhibitions & Highlights



straussart.co.za

May ART

Timed Online Auction, 2 - 12 May 2025

[Auctions](#) / [Auction Details](#) / [Session 3](#) / Lot 139

The Collection of Matthys Swanepoel

[About the Session](#)

SOLD FOR
ZAR 8 794

LOT 138 LOT 139 LOT 140



André Groenewald se skilderye in die kollig

Candice Jantjes

André Groenewald skilder al vir meer as ses dekades en het oor die jare heelwat uitgestel en goeie rensensies en pryse gekry. Tog het sy werk redelik onbekend gebly.

So sê die kunskurator Jeanne Hugo van der Merwe wat verlede jaar vir die eerste keer sy werk oordink het terwyl sy besig was met die waardasie van 'n klassieke Suid-Afrikaanse kunsvaersameling. Sy het al die betekende name herken, soos Gregoire Boonstra, Pieter van der Westhuizen, Pieter van der Merwe, maar glad nie Groenewald se nie.

"Hierdie spesifieke groep skilderye het my dadelik betower met hul besondere palet van hoofsaaklik groen en blou, asook dapper, meesterlike kwassale wat versal landskappe en aangrypende segetone verteenwoordig," beskryf sy Groenewald se werk.

Sy kon nie veel ingeligte oor hom kry nie, maar kon hom opspoor deur die verskeie van die versameling, André en Leonora du Toit.

"Om het dadelik 'n ontmoeting van daer het 'n oëvervloedige tussien my en André gebly."

Heer meer sy van skilderye gesien het, hoe meer het dit haar betower.

"Ek het dadelik besef hierdie kunstenaar is onderaande en sy bydrae tot Suid-Afrika se kunslandskap word nie genoeg geëer nie."

Hugo van der Merwe is die hoofkurator by haar gallery Hugo Modern Art in Welgemoed, waar sy en Groenewald vir die feesyd 'n versameling van 55 van sy skilderye uitsal.

Dit was nie maklik om op die skilderye te besluit nie en sy het byna 100 van sy werke gedokumenteer, gausioneer en geprobeer.

"Maar ons moes 'n narratief vind wat son sin maak. Groenewald put hoofsaaklik inspirasie uit sy verbeelding en dit was vir my belangrik om hierdie beto-

In my verbeelding III.

Kaapstad, gebou. Dit het uitverkoop en dit vir hom moontlik gemaak om hom by die Michaelis-skool vir beeldende kunste by die Universiteit van Kaapstad aan te sluit.

Daar het hy naas en onder kunstenaars soos Lippy Lipshitz, Carl Buchner en Maurice van Esche gestudeer.

Groenewald was vir meer as tien jaar die uitvoerende hoof van die Tygerberg-kunstsentrum in die Kaapstad en dit was die PJ Oltje-kunstsentrum in Stellenbosch.

"André is 'n uiters sensitiewe sê, iets wat 'n mens gereeld sien in van die beste kunstenaars."

"Dit was vir my fascinerend om hierdie sensitiviteit duidelik te sien in sy meesterlike skilderye en in sy karakter, want dis as-

ANDRÉ GROENEWALD

8-10-79 – 27-10-79

UITSTELLINGSTEL

SUID-AFRIKAANSE KUNSVENIGING
KERKSTRAAT 35
KAAPSTAD

05 SOUTH AFRICAN ASSOCIATION OF ARTS
35 CHURCH STREET

- 01 – The Argus, 1980; Cape Times, 1980; Die Volksblad, 1983 | 02 – May 2025 marks the first AW Groenewald successfully sold on the Secondary Market, Strauss & Co. | 03 – Curator + Artist, 2022 | 04 – Die Burger, 2022 | 05 – Solo Exhibition poster 1979

The Curator

Over many years of visiting André I have come to know the man behind the artist.

Beneath the quiet presence is an intensely curious and deeply intellectual mind—an artist with an almost obsessive academic appetite, constantly reading, questioning and refining his understanding of art history and its impact.

His sensibility finds kinship with the transient worlds of artists like Odilon Redon and Marc Chagall, and bravery like that of Georges Braque and Max Ernst, while his enduring fascination with Kenneth Clark's *Civilisation* reveals a painter profoundly attuned to the long arc of cultural legacy, beauty, and the discipline of making.

This catalogue presents a rare, curated selection of more than 70 works by André Wilhelm Groenewald, spanning watercolours, pastels and oils created over the course of a remarkable six-decade practice.



Jeanne Hugo

For sales enquiries and artwork reservations please contact Jeanne Hugo directly.

Works may be secured on a first-come, first-served basis, and early confirmation is advised due to limited availability.



An abstract watercolor painting with soft, blended colors including shades of blue, green, brown, and red. The texture is visible, showing the grain of the paper and the fluid nature of the paint.

A Palette of Memory

The Watercolour Collection

TRANSLUCENCE AND CHANCE—
LIGHT, MOVEMENT, AND IMMEDIACY
HELD IN SUSPENSION.

The Watercolour Collection



AG165
ANDRÉ W. GROENEWALD
MIXED MEDIA ON PAPER
280 X 190 MM
R2,800



AG156
ANDRÉ W. GROENEWALD
WATERCOLOUR ON PAPER
300 X 400 MM
R3,800

WatercolourCollection



AG166
ANDRÉ W. GROENEWALD
WATERCOLOUR ON PAPER
210 X 300 MM
R3,200



AG168
ANDRÉ W. GROENEWALD
WATERCOLOUR ON PAPER
460 X 300 MM
R2,800

The Watercolour Collection



AG132
ANDRÉ W. GROENEWALD
WATERCOLOUR ON PAPER
440 X 340 MM
R3,800



AG133
ANDRÉ W. GROENEWALD
WATERCOLOUR ON PAPER
380 X 280 MM
R2,400

The Watercolour Collection



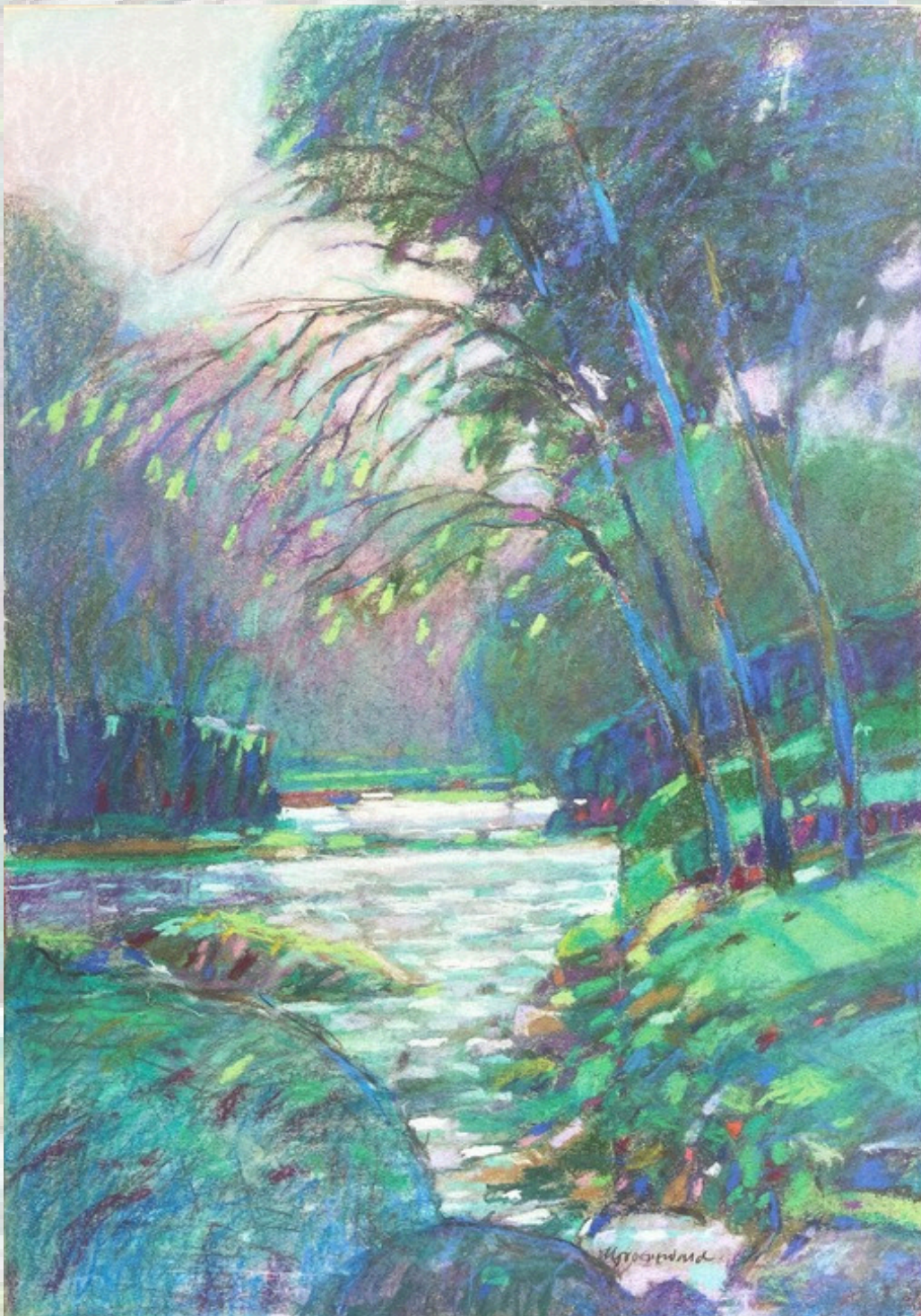
AG164
ANDRÉ W. GROENEWALD
WATERCOLOUR ON PAPER
200 X 250 MM
R2,800

A pastel artwork depicting a coastal scene. In the foreground, there's a rocky shore with various shades of blue, green, and purple. A large, dark, rounded rock formation stands prominently on the right side. The middle ground shows a body of water with soft, blended colors of blue and green. The background features a hazy, pastel sky with shades of blue, purple, and pink, suggesting a sunset or sunrise. The overall style is soft and atmospheric, with visible pastel strokes and a muted color palette.

The Pastel Collection

PIGMENT AS SURFACE—QUIET
INTENSITY, SOFTENED EDGES, AND
LUMINOUS SATURATION.

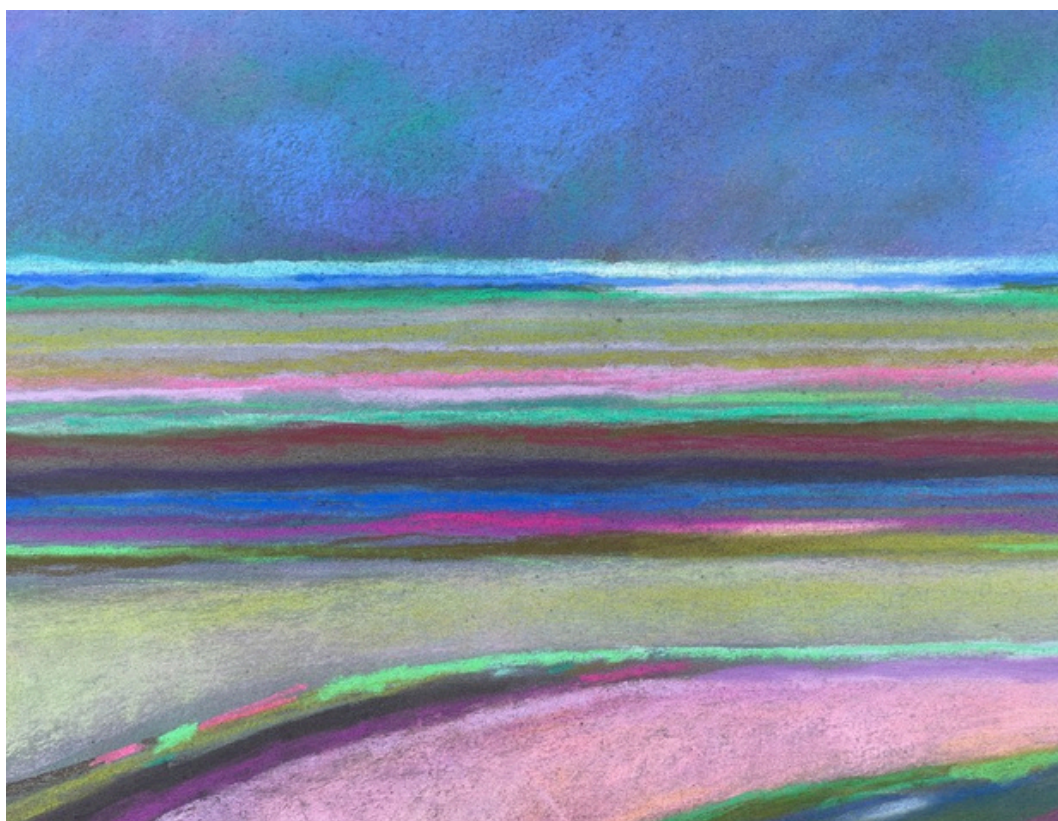
The Pastel Collection



AG154
ANDRÉ W. GROENEWALD
PASTEL ON PAPER
600 X 420 MM
R8,200



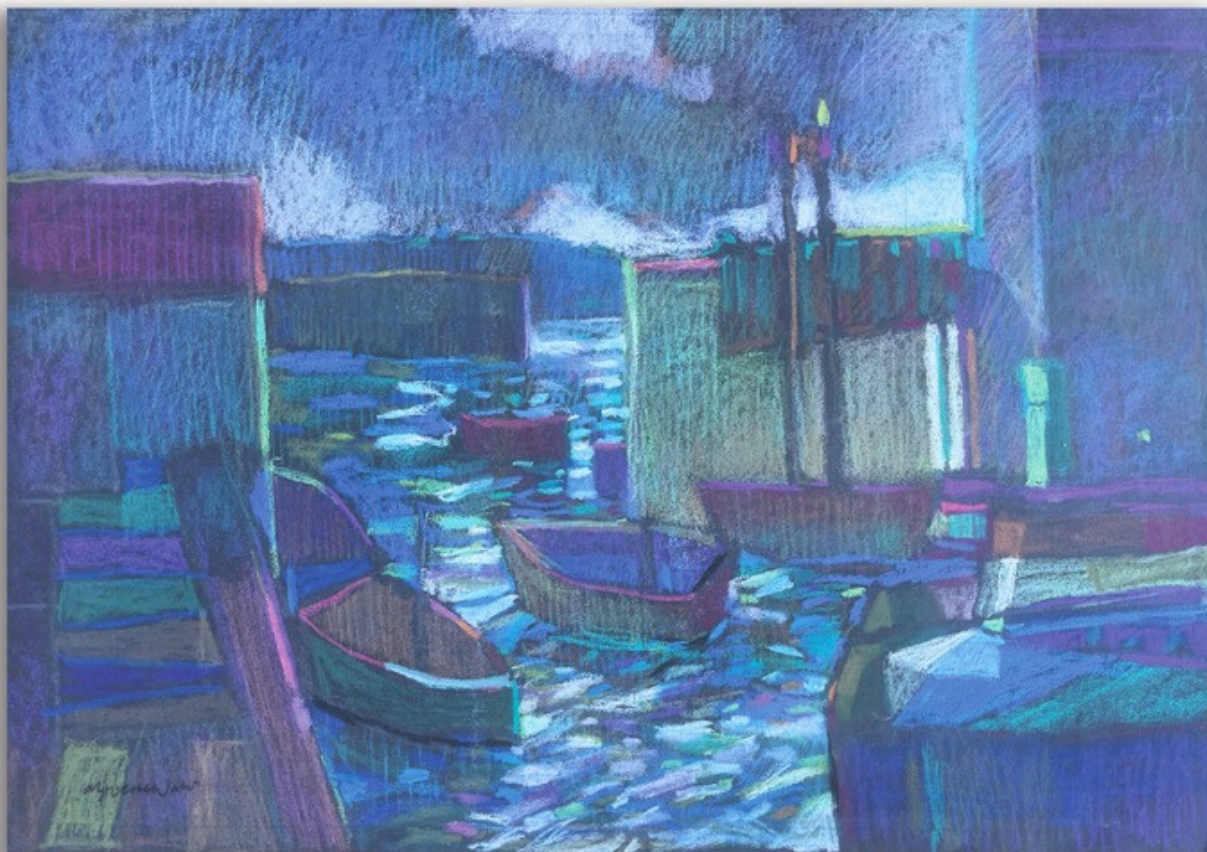
AG107
 ANDRÉ W. GROENEWALD
 PASTEL ON PAPER
 600 X 430 MM
 R5,200



AG108
 ANDRÉ W. GROENEWALD
 PASTEL ON PAPER
 380 X 560 MM
 R7,300



AG109
ANDRÉ W. GROENEWALD
PASTEL ON PAPER
550 X 390 MM
R7,300



AG110
ANDRÉ W. GROENEWALD
PASTEL ON PAPER
570 X 400 MM
R8,200



AG136
ANDRÉ W. GROENEWALD
PASTEL ON PAPER
600 X 450 MM
R8,200



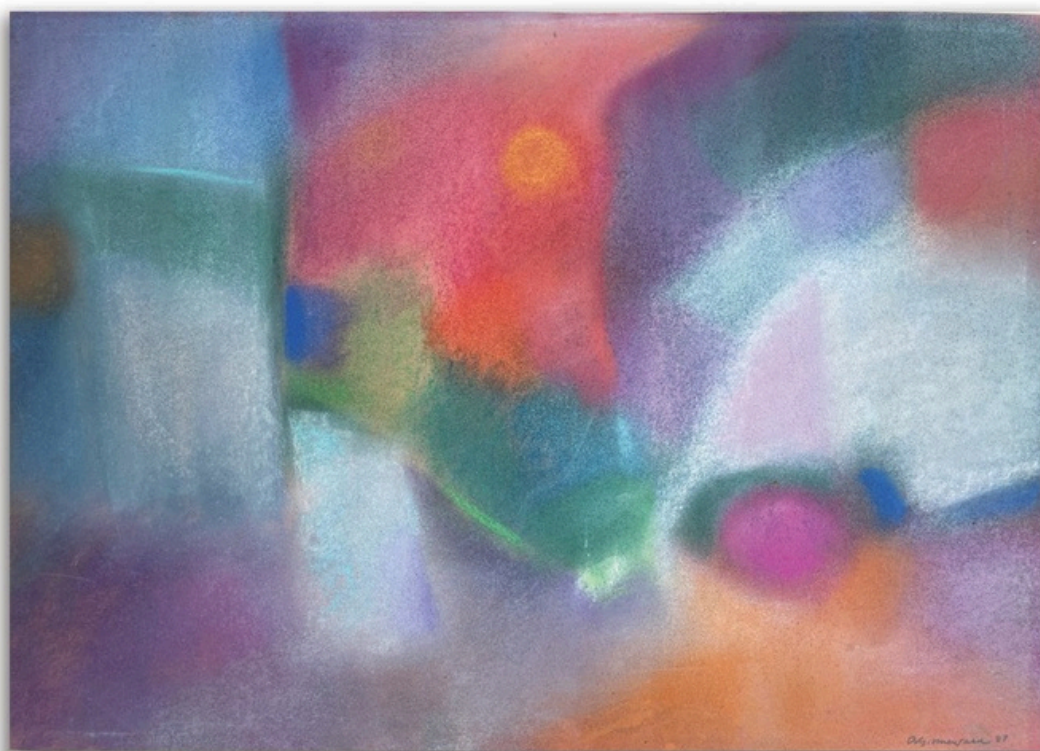
AG111
ANDRÉ W. GROENEWALD
PASTEL ON PAPER
650 X 500 MM
R6,900



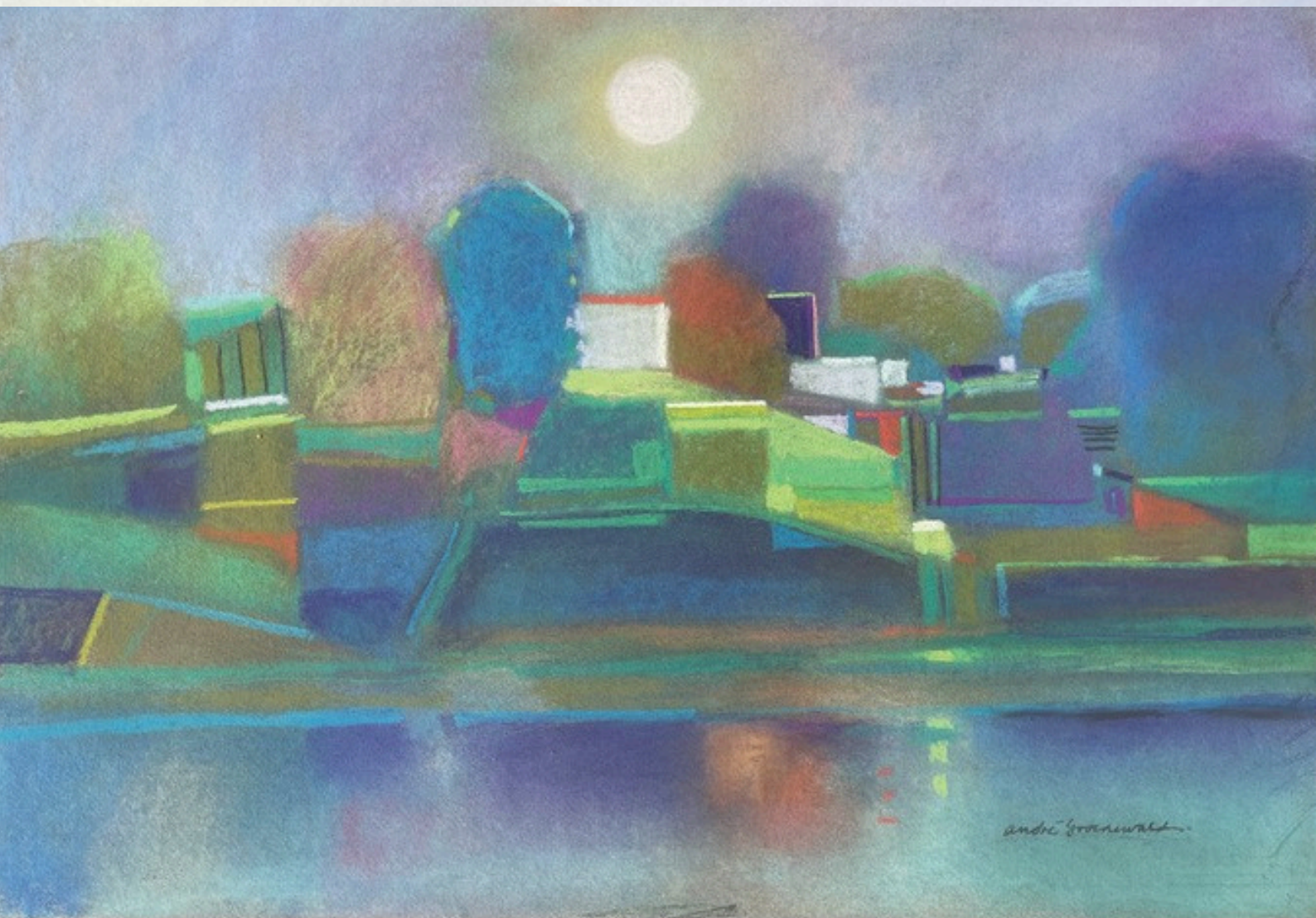
AG114
ANDRÉ W. GROENEWALD
PASTEL ON PAPER
600 X 430 MM
R3,800



AG123
 ANDRÉ W. GROENEWALD
 PASTEL ON PAPER
 350 X 480 MM
 R5,400



AG125
 ANDRÉ W. GROENEWALD
 PASTEL ON PAPER
 600 X 430 MM
 R8,200



AG170
ANDRÉ W. GROENEWALD
PASTEL ON PAPER
600 X 420 MM
R8,200



The Pastel Collection



AG112
ANDRÉ W. GROENEWALD
PASTEL ON PAPER
600 X 420 MM
R4,800

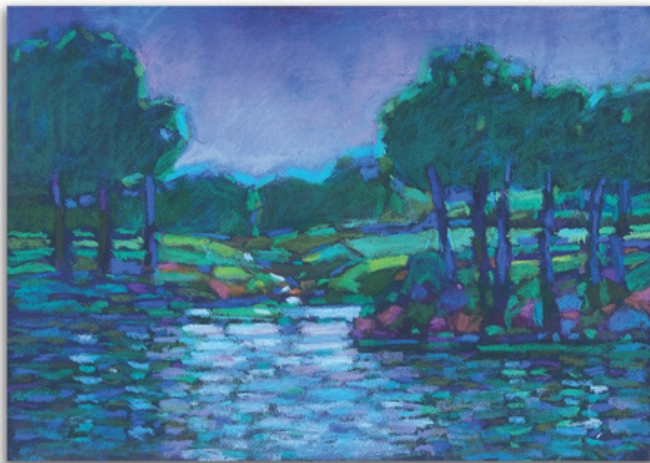


AG113
ANDRÉ W. GROENEWALD
PASTEL ON PAPER
470 X 420 MM
R4,200

The Pastel Collection



AG139
ANDRÉ W. GROENEWALD
PASTEL ON PAPER
600 X 440 MM
R8,200



AG115
ANDRÉ W. GROENEWALD
PASTEL ON PAPER
500 X 330 MM
R3,200



AG116
ANDRÉ W. GROENEWALD
PASTEL ON PAPER
200 X 320 MM
R3,200



AG122
ANDRÉ W. GROENEWALD
PASTEL ON PAPER
560 X 410 MM
R8,200



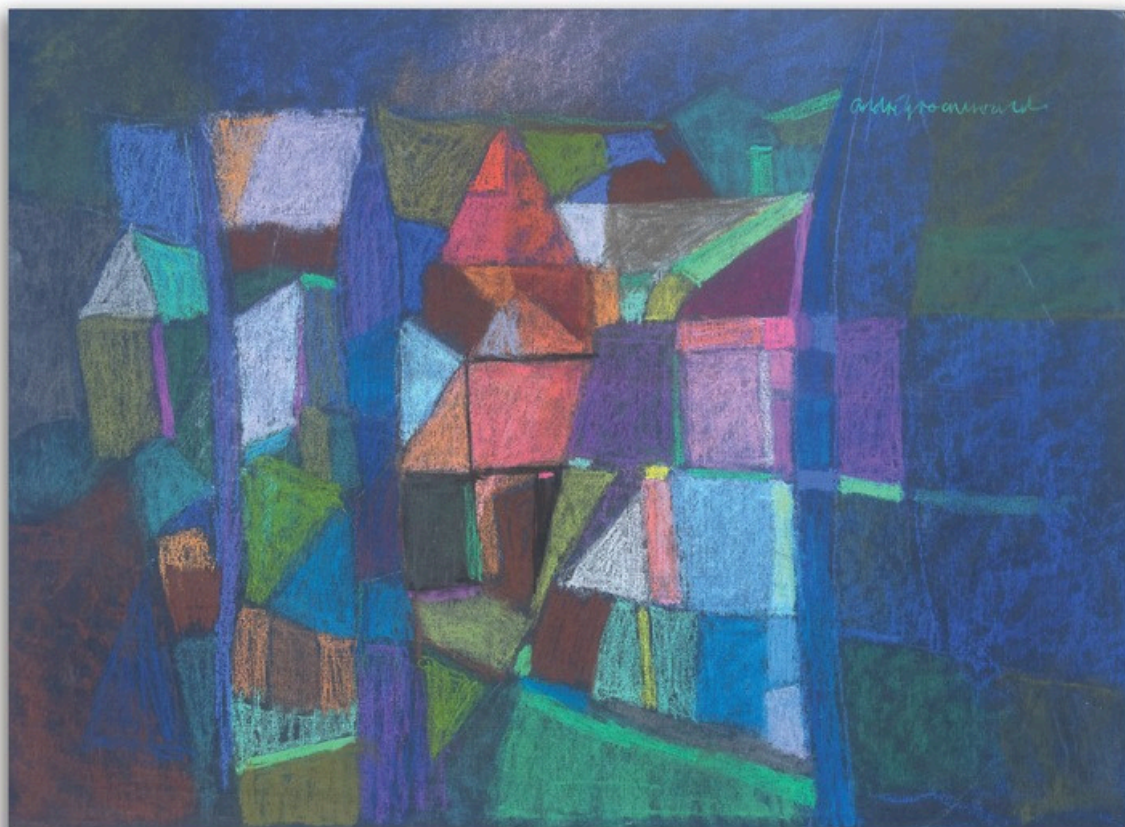
AG121
ANDRÉ W. GROENEWALD
PASTEL ON PAPER
270 X 170 MM
R2,800



AG120
ANDRÉ W. GROENEWALD
PASTEL ON PAPER
490 X 350 MM
R4,200



AG160
ANDRÉ W. GROENEWALD
PASTEL ON PAPER
280 X 380 MM
R3,800



AG122
 ANDRÉ W. GROENEWALD
 PASTEL ON PAPER
 560 X 410 MM
 R8,200



AG135
 ANDRÉ W. GROENEWALD
 PASTEL ON PAPER
 570 X 390 MM
 R7,300

The Pastel Collection



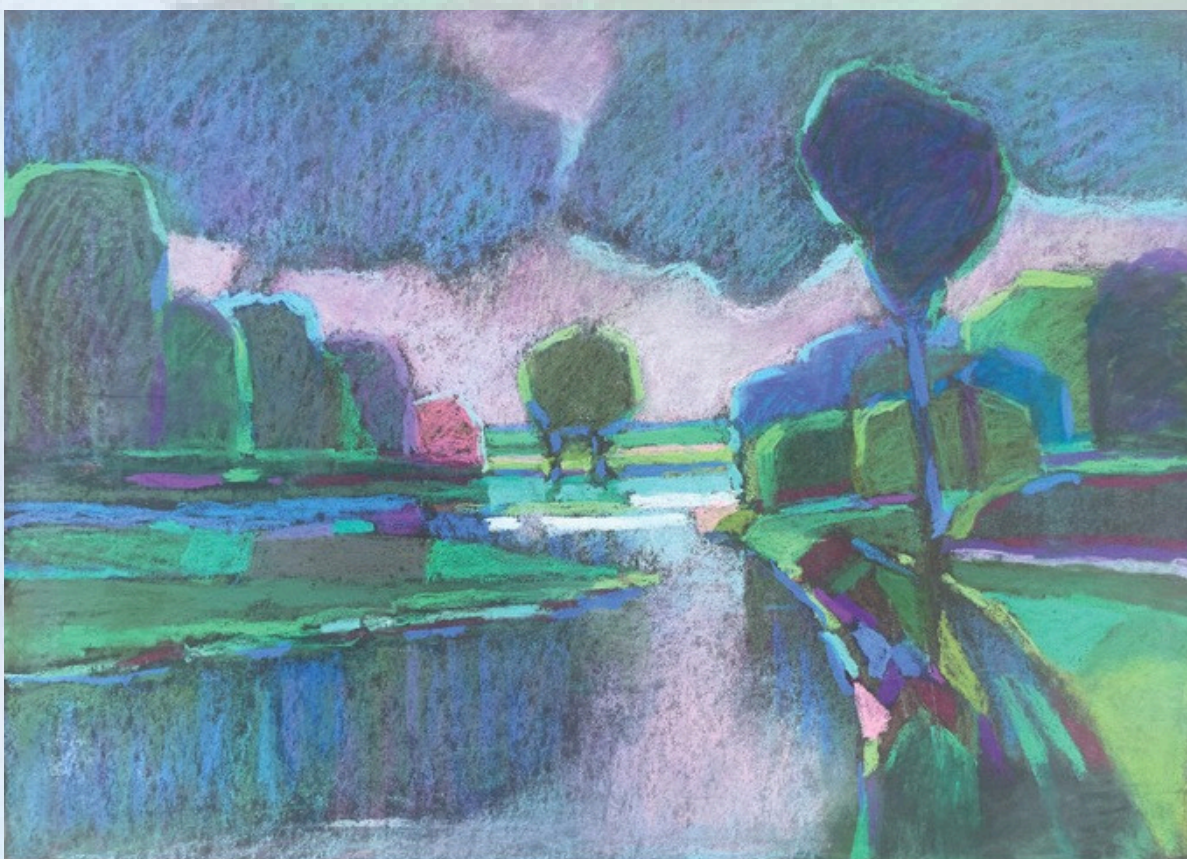
AG140
ANDRÉ W. GROENEWALD
PASTEL ON PAPER
570 X 400 MM
R8,200



AG137
ANDRÉ W. GROENEWALD
PASTEL ON PAPER
600 X 440 MM
R7,300



AG151
 ANDRÉ W. GROENEWALD
 PASTEL ON PAPER
 590 X 430 MM
 R8,200



AG150
 ANDRÉ W. GROENEWALD
 PASTEL ON PAPER
 580 X 420 MM
 R7,300



AG142
ANDRÉ W. GROENEWALD
PASTEL ON PAPER
370 X 520 MM
R6,800



AG141
ANDRÉ W. GROENEWALD
PASTEL ON PAPER
530 X 390 MM
R7,300



AG119
ANDRÉ W. GROENEWALD
PASTEL ON PAPER
570 X 410 MM
R7,300



AG158
ANDRÉ W. GROENEWALD
PASTEL ON PAPER
590 X 420 MM
R6,800



AG167
ANDRÉ W. GROENEWALD
MIXED MEDIA ON PAPER
300 X 200 MM
R2,800



AG104
ANDRÉ W. GROENEWALD
MIXED MEDIA ON PAPER
600 X 420 MM
R4,500



AG161
ANDRÉ W. GROENEWALD
PASTEL ON PAPER
380 X 280 MM
R3,800



AG162
ANDRÉ W. GROENEWALD
PASTEL ON PAPER
380 X 380 MM
R3,800



AG153
ANDRÉ W. GROENEWALD
OIL ON BOARD
750 X 600 MM
R6,800



AG124
ANDRÉ W. GROENEWALD
PASTEL ON PAPER
390 X 280 MM
R2,800



AG145
ANDRÉ W. GROENEWALD
PASTEL ON PAPER
580 X 400 MM
R6,800



AG118
ANDRÉ W. GROENEWALD
PASTEL ON PAPER
540 X 410 MM
R5,800

The Pastel Collection



AG169
ANDRÉ W. GROENEWALD
PASTEL ON PAPER
430 X 590 MM
R4,200



AG159
ANDRÉ W. GROENEWALD
PASTEL ON PAPER
420 X 600 MM
R6,800



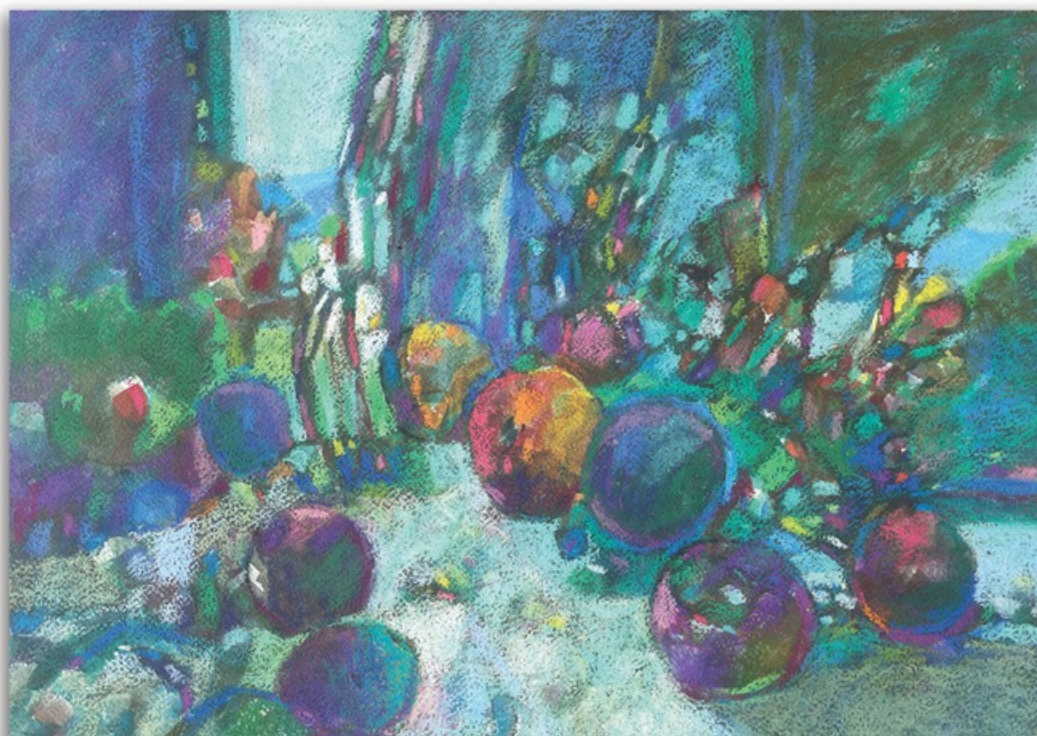
AG143
 ANDRÉ W. GROENEWALD
 PASTEL ON PAPER
 540 X 380 MM
 R8,200



AG126
 ANDRÉ W. GROENEWALD
 PASTEL ON PAPER
 650 X 500 MM
 R8,200



AG130
 ANDRÉ W. GROENEWALD
 PASTEL ON PAPER
 420 X 600 MM
 R4,300



AG129
 ANDRÉ W. GROENEWALD
 PASTEL ON PAPER
 570 X 420 MM
 R7,300

The Pastel Collection



AG106
ANDRÉ W. GROENEWALD
PASTEL ON PAPER
420 X 600 MM
R7,300



AG105
ANDRÉ W. GROENEWALD
MIXED MEDIA ON BOARD
850 X 590 MM
R6,250

An oil painting of a still life. In the foreground, a glass of water with a white, textured surface and a dark, vertical pattern inside. Behind it, a vase filled with a bouquet of flowers in various colors including purple, blue, pink, and red. The background is a dark, textured green. The painting style is visible with brushstrokes and layered colors.

The Oil Collection

A SLOWER MEDIUM OF PERMANENCE—
LAYERED COLOUR, TONAL WEIGHT, AND
THE ARCHITECTURE OF PAINT.

The Oil Collection



AG131
ANDRÉ W. GROENEWALD
OIL ON PAPER
350 X 500 MM
R5,800

The Oil Collection



AG163
ANDRÉ W. GROENEWALD
OIL ON BOARD
170 X 260 MM
R3,200



AG103
ANDRÉ W. GROENEWALD
OIL ON BOARD
570 X 450 MM
R6,800 (FRAMED)



AG146
ANDRÉ W. GROENEWALD
OIL ON BOARD
730 X 610 MM
R8,200

The Oil Collection



AG147
ANDRÉ W. GROENEWALD
OIL ON BOARD
600 X 460 MM
R5,200



AG148
ANDRÉ W. GROENEWALD
OIL ON BOARD
600 X 460 MM
R5,200



AG172
AW GROENEWALD
OIL ON BOARD
450 X 350 MM
R9,800
FRAMED

The Oil Collection



AG149
ANDRÉ W. GROENEWALD
OIL ON BOARD
600 X 750 MM
R12,300

The Oil Collection



AG100
ANDRÉ W. GROENEWALD
OIL ON BOARD
750 X 600 MM
R7,550
FRAMED

The Oil Collection



AG171
ANDRÉ W. GROENEWALD
OIL ON BOARD
560 X 680 MM
R8,200

Custom Framing Available

All artworks are sold unframed unless otherwise stated. I'd be happy to help you frame yours, please request a quote.



In these paintings, time slows, colour lingers, and a lifetime of quiet devotion finds its audience at last.

For availability and acquisitions, please contact Jeanne Hugo.

Thank you

+27(0)603830815



jeanne@hugomodern.art



25 Hofmeyr Street, Welgemoed,
Cape Town, South Africa



WWW.HUGOMODERN.ART