

AW  
GROENEWALD  
*The Palette of Memory*

A RARE PRESENTATION OF  
PREVIOUSLY UNSEEN WORKS  
PRESENTED BY



# Contents

- THE QUIET ARCHIVE
- NOTABLE EXHIBITIONS & HIGHLIGHTS
- THE CURATOR
- THE WATERCOLOUR COLLECTION
- THE PASTEL COLLECTION
- THE OIL COLLECTION
- CONTACT



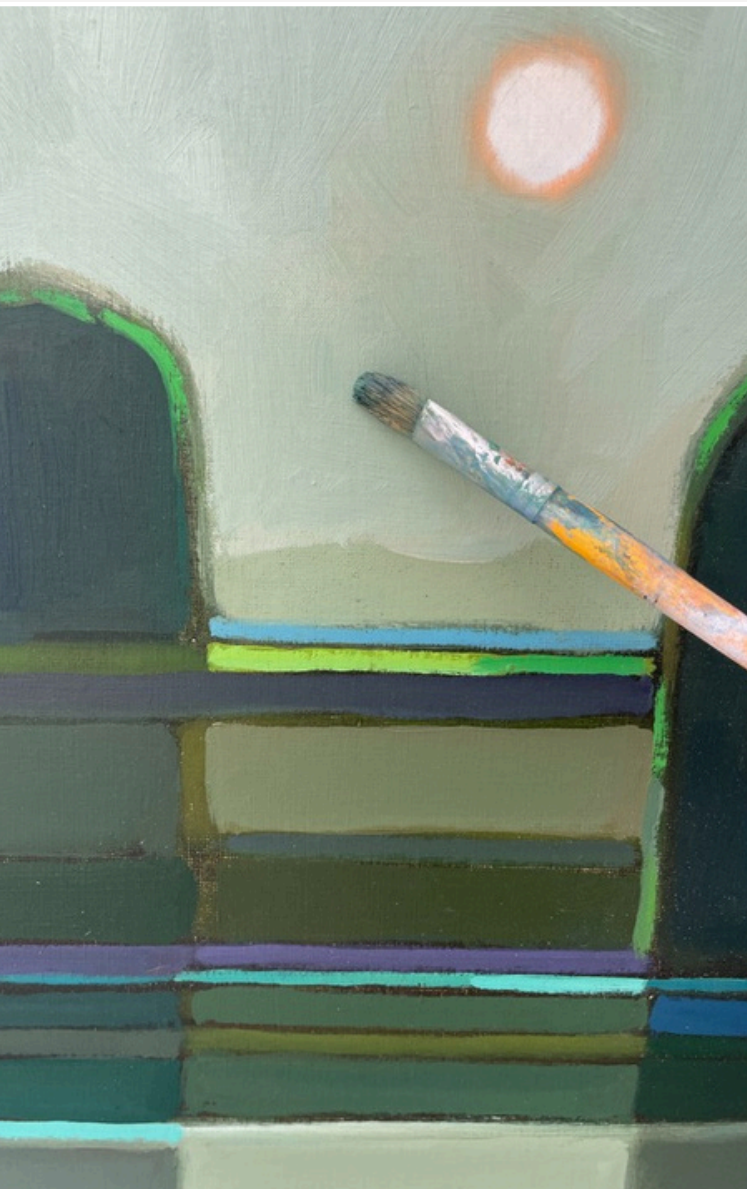
# The Quiet Archive

André Wilhelm Groenewald (b.1941) occupies a quietly compelling position within South African art history: a painter of rare technical fluency whose oeuvre has unfolded largely outside the mechanisms of public acclaim.

Born in Cape Town and exhibiting professionally from the age of seventeen, Groenewald's early promise was confirmed through formal training at the Michaelis School of Fine Art in 1959, where he studied within a lineage shaped by figures such as Lippy Lipshitz, Carl Büchner and Maurice van Essche. Yet, unlike many of his contemporaries whose careers were shaped by institutional visibility and critical discourse, Groenewald's artistic life developed in sustained privacy—resulting in an expansive body of work produced with remarkable consistency over more than six decades.



Cape Town | 1960



Groenewald's painterly language reflects a deep conversation with early European modernism: the chromatic freedom of the Fauves—particularly Matisse and Derain—the compositional architecture of Cubism as seen in Braque and early Picasso, and the atmospheric sensitivity of the Impressionists such as Monet and Pissarro. Yet these influences are never imitative; they are absorbed and distilled into a personal vocabulary of luminous greens, softened geometry, and meditative, imagined space.

A signature palette of Phthalo and Prussian greens, cobalt, turquoise and Viridian dominates his compositions, creating an immediately recognisable chromatic identity. This persistent tonal vocabulary, repeated across decades, gives his oeuvre the coherence of a lifelong visual philosophy: a disciplined exploration of calm, vistas, and painterly illusion.

Groenewald's importance lies not only in his longevity, but in the way his practice reflects an authentically South African art - one that developed naturally, and beyond the mainstream narrative of political urgency and public spectacle. His work speaks instead to a quieter modernism, rooted in observation, and the poetic potential of the medium itself. In this sense, Groenewald's artworks function as an alternative archive: a sustained meditation on beauty, solitude and interior geography, created with unwavering dedication.



# The Curator

Over many years of visiting André I have come to know the man behind the artist.

Beneath the quiet presence is an intensely curious and deeply intellectual mind—an artist with an almost obsessive academic appetite, constantly reading, questioning and refining his understanding of art history and its impact.

His sensibility finds kinship with the transient worlds of artists like Odilon Redon and Marc Chagall, and bravery like that of Georges Braque and Max Ernst, while his enduring fascination with Kenneth Clark's *Civilisation* reveals a painter profoundly attuned to the long arc of cultural legacy, beauty, and the discipline of making.

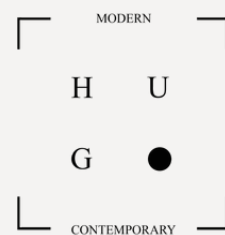
This catalogue presents a rare, curated selection of more than 70 works by André Wilhelm Groenewald, spanning watercolours, pastels and oils created over the course of a remarkable six-decade practice.



*Jeanne Hugo*

For sales enquiries and artwork reservations please contact Jeanne Hugo directly.

Works may be secured on a first-come, first-served basis, and early confirmation is advised due to limited availability.



A watercolor painting of a landscape. The background is a light, textured grey. In the foreground, there are several large, rounded shapes representing mountains or hills, rendered in various shades of green, blue, and brown. A river or stream flows through the center, with a mix of blue, green, and brown tones. The overall style is soft and painterly, with visible brushstrokes and a sense of movement.

# *A Palette of Memory*

## *The Watercolour Collection*

TRANSLUCENCE AND CHANGE—  
LIGHT, MOVEMENT, AND IMMEDIACY  
HELD IN SUSPENSION.

# *The Watercolour Collection*



AG165  
ANDRÉ W. GROENEWALD  
MIXED MEDIA ON PAPER  
190 X 280 MM  
R2,800  
SOLD



AG156  
ANDRÉ W. GROENEWALD  
WATERCOLOUR ON PAPER  
300 X 400 MM  
SOLD

# WatercolourCollection



AG166  
ANDRÉ W. GROENEWALD  
WATERCOLOUR ON PAPER  
210 X 300 MM  
R3,200



AG168  
ANDRÉ W. GROENEWALD  
WATERCOLOUR ON PAPER  
300 X 460 MM  
SOLD

# *The Watercolour Collection*



AG132  
ANDRÉ W. GROENEWALD  
WATERCOLOUR ON PAPER  
340 X 440 MM  
SOLD



AG133  
ANDRÉ W. GROENEWALD  
WATERCOLOUR ON PAPER  
280 X 380 MM  
SOLD

# *The Watercolour Collection*



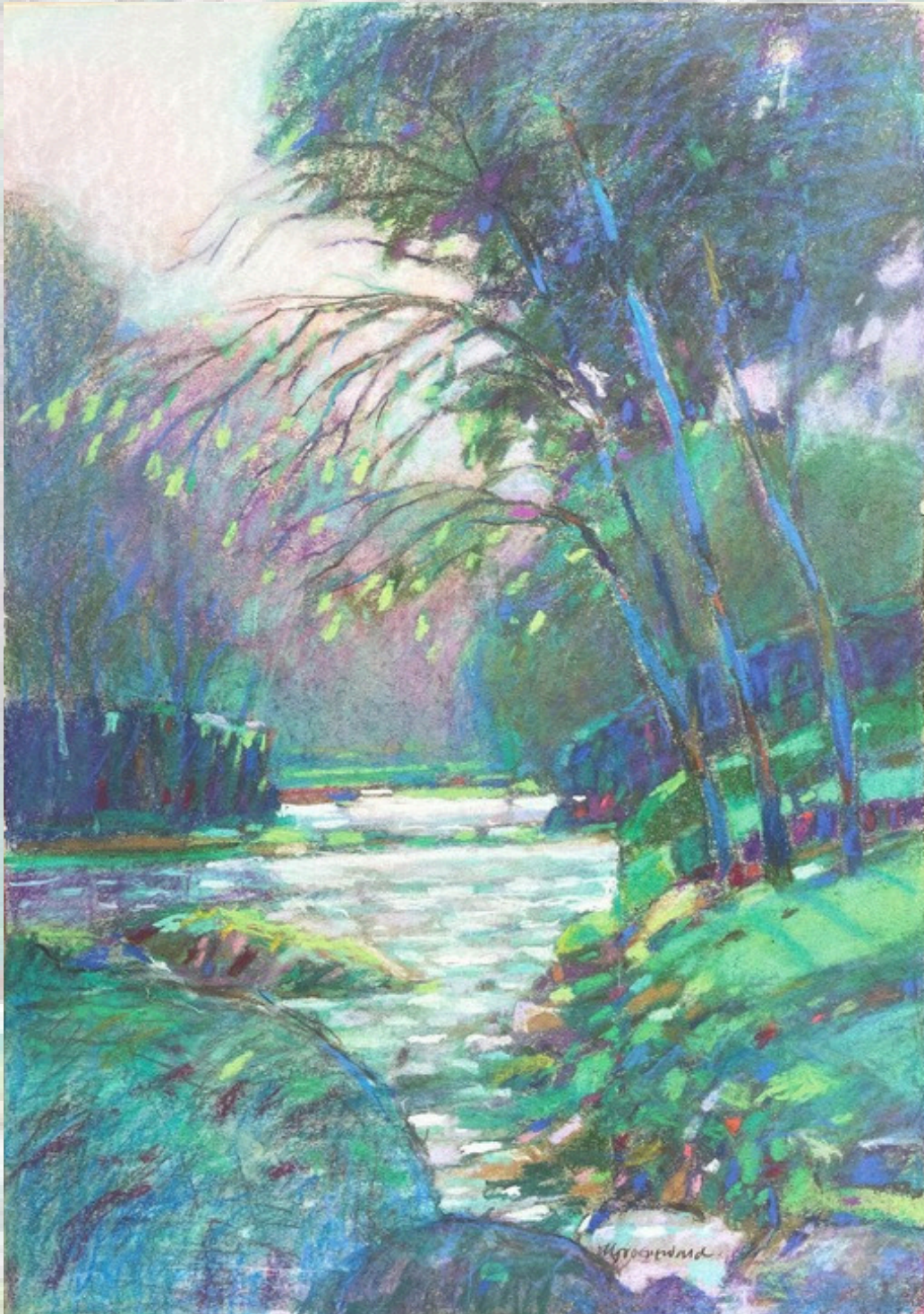
AG164  
ANDRÉ W. GROENEWALD  
WATERCOLOUR ON PAPER  
250 X 200 MM  
R2,800

A pastel painting of a landscape. In the foreground, a large, dark, rounded rock formation sits on a patch of green and blue ground. To the left, a path or stream flows through a field of green and blue. In the background, a body of water stretches across the horizon under a vast, textured sky of blue and purple. The overall style is soft and atmospheric, characteristic of pastel art.

# *The Pastel Collection*

PIGMENT AS SURFACE—QUIET  
INTENSITY, SOFTENED EDGES, AND  
LUMINOUS SATURATION.

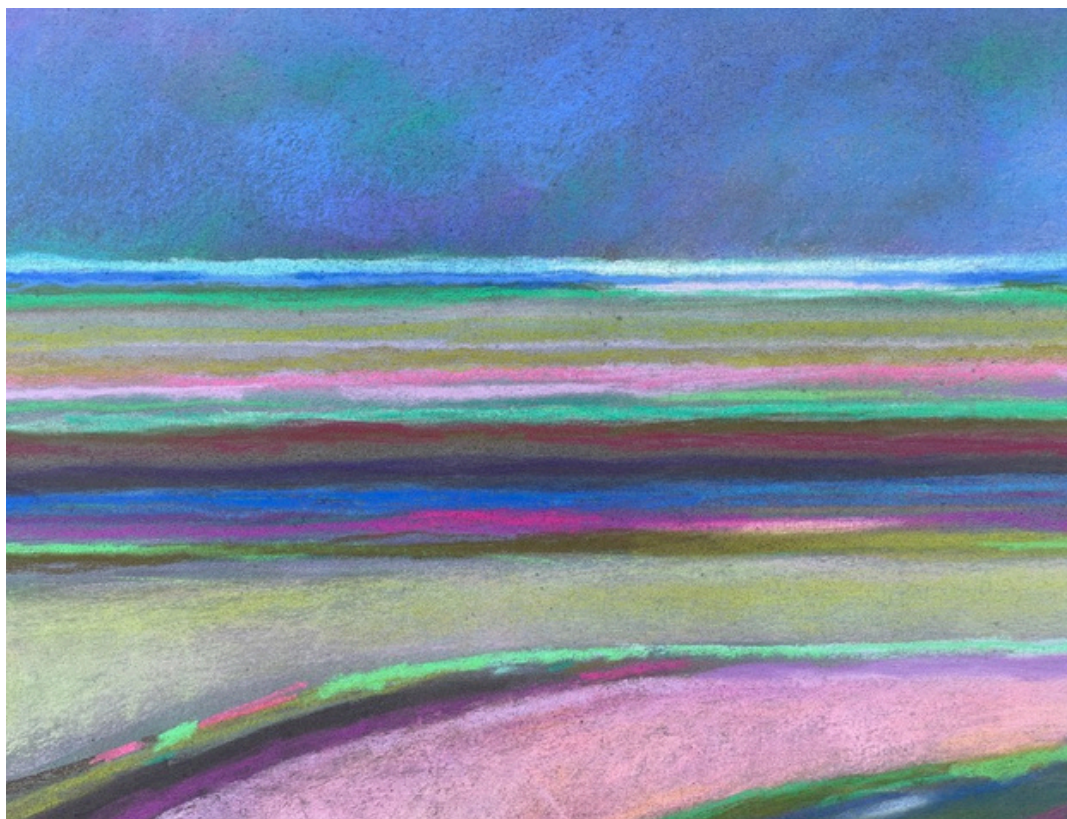
# *The Pastel Collection*



AG154  
ANDRÉ W. GROENEWALD  
PASTEL ON PAPER  
600 X 420 MM  
R8,200



AG107  
ANDRÉ W. GROENEWALD  
PASTEL ON PAPER  
430 X 600 MM  
R5,200  
**SOLD**



AG108  
ANDRÉ W. GROENEWALD  
PASTEL ON PAPER  
380 X 560 MM  
R7,300



AG109  
ANDRÉ W. GROENEWALD  
PASTEL ON PAPER  
390 X 550 MM  
R7,300



AG110  
ANDRÉ W. GROENEWALD  
PASTEL ON PAPER  
400 X 570 MM  
SOLD



AG136  
ANDRÉ W. GROENEWALD  
PASTEL ON PAPER  
450 X 600 MM  
R8,200



AG11  
ANDRÉ W. GROENEWALD  
PASTEL ON PAPER  
500 X 650 MM  
R6,900



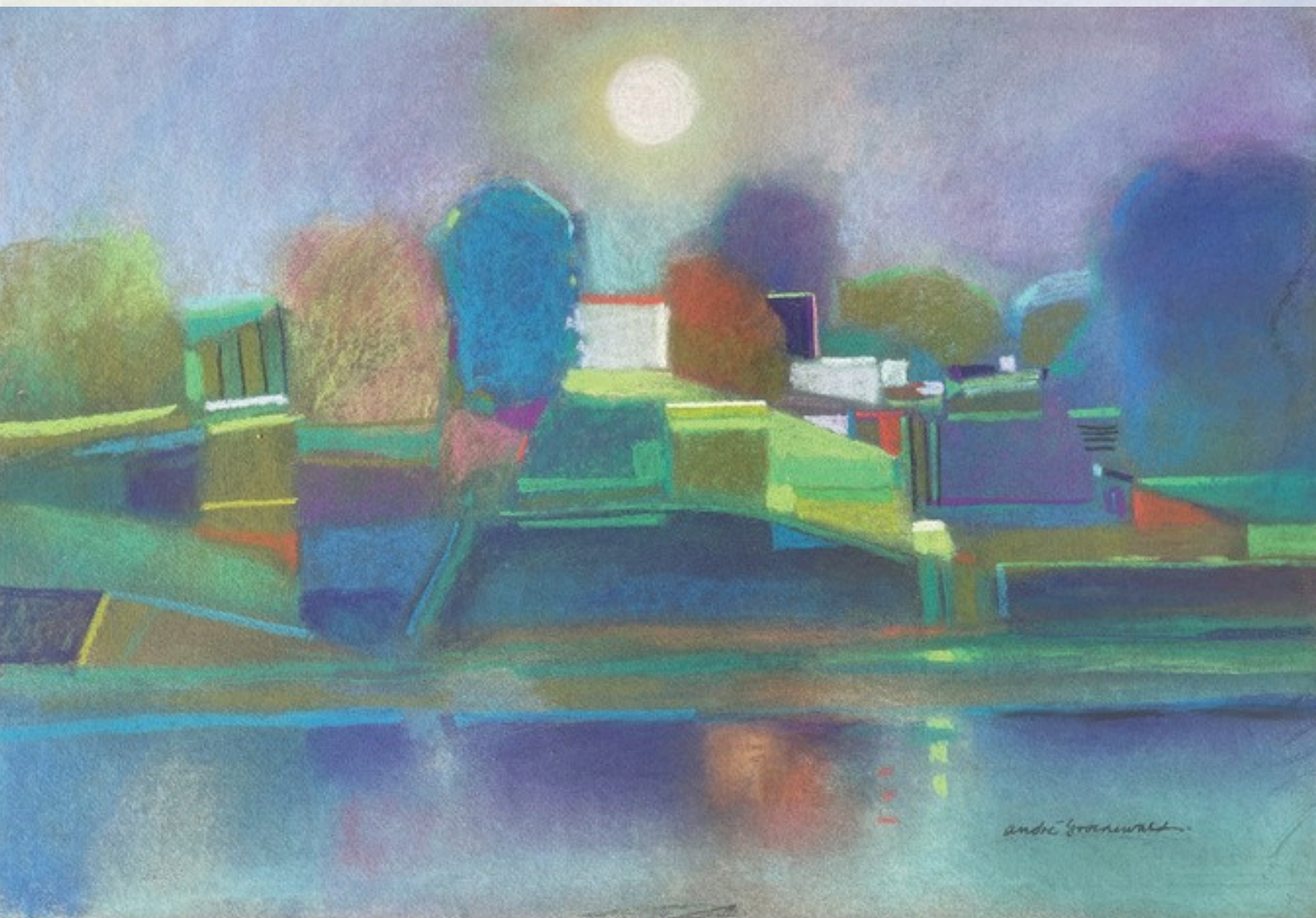
AG14  
ANDRÉ W. GROENEWALD  
PASTEL ON PAPER  
430 X 600 MM  
SOLD



AG123  
ANDRÉ W. GROENEWALD  
PASTEL ON PAPER  
480 X 350 MM  
SOLD



AG125  
ANDRÉ W. GROENEWALD  
PASTEL ON PAPER  
430 X 600 MM  
R8,200



AG170  
ANDRÉ W. GROENEWALD  
PASTEL ON PAPER  
420 X 600 MM  
R8,200

andré groenewald

# *The Pastel Collection*



AG112  
ANDRÉ W. GROENEWALD  
PASTEL ON PAPER  
420 X 600 MM  
R4,800

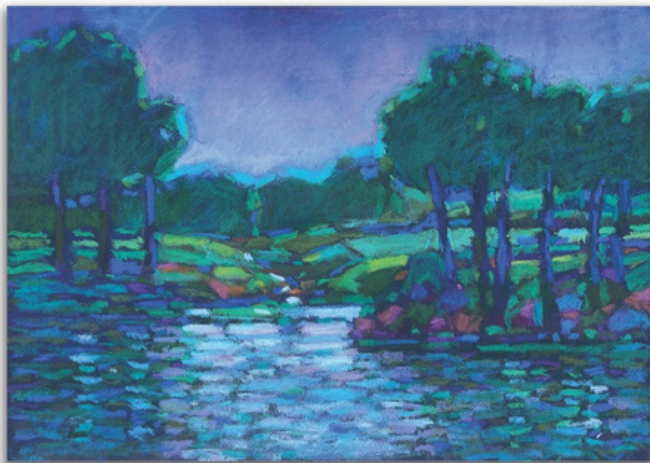


AG113  
ANDRÉ W. GROENEWALD  
PASTEL ON PAPER  
420 X 470 MM  
R4,200

*The Pastel Collection*



AG139  
ANDRÉ W. GROENEWALD  
PASTEL ON PAPER  
440 X 600 MM  
SOLD



AG115  
ANDRÉ W. GROENEWALD  
PASTEL ON PAPER  
330 X 500 MM  
R3,200  
SOLD



AG116  
ANDRÉ W. GROENEWALD  
PASTEL ON PAPER  
320 X 200 MM  
R3,200



AG117  
ANDRÉ W. GROENEWALD  
PASTEL ON PAPER  
410 X 560 MM  
R5,800



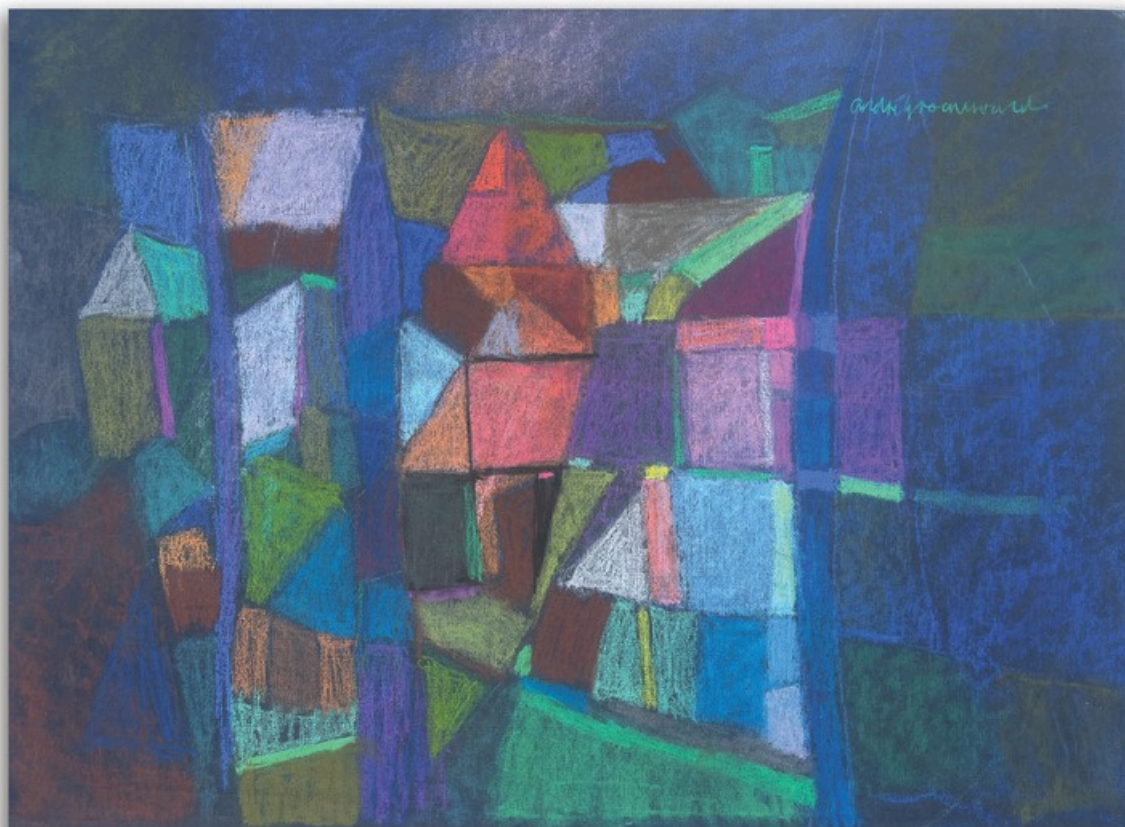
AG121  
ANDRÉ W. GROENEWALD  
PASTEL ON PAPER  
170 X 270 MM  
SOLD



AG120  
ANDRÉ W. GROENEWALD  
PASTEL ON PAPER  
350 X 490 MM  
R4,200  
SOLD



AG160  
ANDRÉ W. GROENEWALD  
PASTEL ON PAPER  
280 X 380 MM  
R3,800



AG122  
ANDRÉ W. GROENEWALD  
PASTEL ON PAPER  
410 X 560 MM  
R8,200



AG135  
ANDRÉ W. GROENEWALD  
PASTEL ON PAPER  
390 X 570 MM  
R7,300



AG155  
ANDRÉ W. GROENEWALD  
PASTEL ON PAPER  
430 X 590 MM  
R6,800

# *The Pastel Collection*



AG140  
ANDRÉ W. GROENEWALD  
PASTEL ON PAPER  
400 X 570 MM  
R8,200



AG137  
ANDRÉ W. GROENEWALD  
PASTEL ON PAPER  
440 X 600 MM  
R7,300



AG151  
ANDRÉ W. GROENEWALD  
PASTEL ON PAPER  
430 X 590 MM  
R8,200



AG150  
ANDRÉ W. GROENEWALD  
PASTEL ON PAPER  
420 X 580 MM  
R7,300



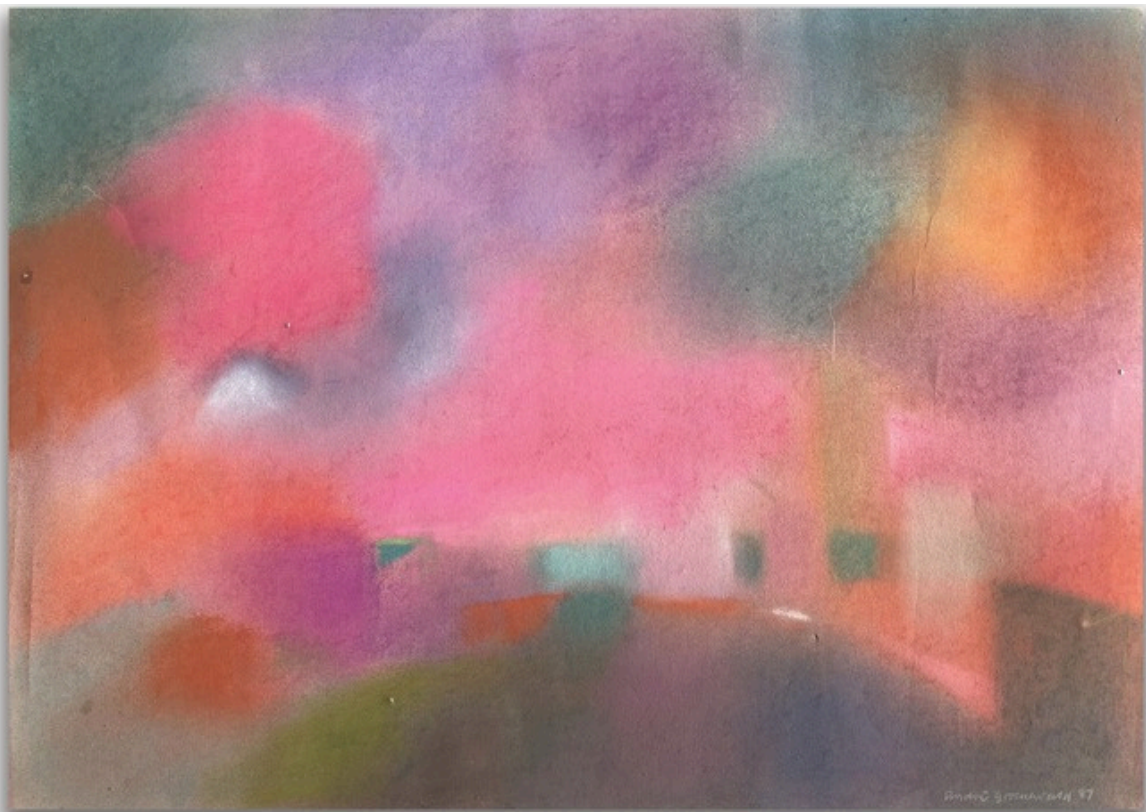
AG142  
ANDRÉ W. GROENEWALD  
PASTEL ON PAPER  
370 X 520 MM  
R6,800



AG141  
ANDRÉ W. GROENEWALD  
PASTEL ON PAPER  
390 X 530 MM  
R7,300



AG119  
ANDRÉ W. GROENEWALD  
PASTEL ON PAPER  
410 X 570 MM  
R7,300



AG158  
ANDRÉ W. GROENEWALD  
PASTEL ON PAPER  
420 X 590 MM  
R6,800



AG167  
ANDRÉ W. GROENEWALD  
MIXED MEDIA ON PAPER  
200 X 300 MM  
R2,800



AG104  
ANDRÉ W. GROENEWALD  
MIXED MEDIA ON PAPER  
420 X 600 MM  
R4,500  
SOLD



AG161  
ANDRÉ W. GROENEWALD  
PASTEL ON PAPER  
380 X 280 MM  
R3,800



AG162  
ANDRÉ W. GROENEWALD  
PASTEL ON PAPER  
380 X 380 MM  
R3,800



AG153  
ANDRÉ W. GROENEWALD  
PASTEL ON PAPER  
600 X 750 MM  
SOLD



AG124  
ANDRÉ W. GROENEWALD  
PASTEL ON PAPER  
280 X 390 MM  
SOLD



AG145  
ANDRÉ W. GROENEWALD  
PASTEL ON PAPER  
400 X 580 MM  
R6,800



AG118  
ANDRÉ W. GROENEWALD  
PASTEL ON PAPER  
540 X 410 MM  
R5,800

# *The Pastel Collection*



AG169  
ANDRÉ W. GROENEWALD  
PASTEL ON PAPER  
430 X 590 MM  
R4,200  
**SOLD**



AG159  
ANDRÉ W. GROENEWALD  
PASTEL ON PAPER  
420 X 600 MM  
R6,800



AG130  
ANDRÉ W. GROENEWALD  
PASTEL ON PAPER  
600 X 420 MM  
SOLD



AG129  
ANDRÉ W. GROENEWALD  
PASTEL ON PAPER  
420 X 570 MM  
R7,300

# *The Pastel Collection*



AG106  
ANDRÉ W. GROENEWALD  
PASTEL ON PAPER  
600 X 420 MM  
R7,300



AG105  
ANDRÉ W. GROENEWALD  
MIXED MEDIA ON BOARD  
850 X 590 MM  
R6,250



# *The Oil Collection*

A SLOWER MEDIUM OF PERMANENCE—  
LAYERED COLOUR, TONAL WEIGHT, AND  
THE ARCHITECTURE OF PAINT.

# *The Oil Collection*



AG131  
ANDRÉ W. GROENEWALD  
OIL ON PAPER  
500 X 350 MM  
SOLD

*The Oil Collection*



AG163  
ANDRÉ W. GROENEWALD  
OIL ON BOARD  
260 X 170 MM  
R3,200



AG103  
ANDRÉ W. GROENEWALD  
OIL ON BOARD  
570 X 450 MM  
R6,800 (FRAMED)



AG146  
ANDRÉ W. GROENEWALD  
OIL ON BOARD  
610 X 730 MM  
R8,200

# *The Oil Collection*



AG147  
ANDRÉ W. GROENEWALD  
OIL ON BOARD  
460 X 600 MM  
R5,200



AG148  
ANDRÉ W. GROENEWALD  
OIL ON BOARD  
460 X 600 MM  
R5,200



AG172  
AW GROENEWALD  
OIL ON BOARD  
450 X 350 MM  
SOLD

*The Oil Collection*



AG149  
ANDRÉ W. GROENEWALD  
OIL ON BOARD  
750 X 600 MM  
SOLD

# *The Oil Collection*



AG100  
ANDRÉ W. GROENEWALD  
OIL ON BOARD  
750 X 600 MM  
R7,550  
FRAMED

# *The Oil Collection*



AG171  
ANDRÉ W. GROENEWALD  
OIL ON BOARD  
560 X 680 MM  
R8,200

# *Custom Framing Available*

All artworks are sold unframed unless otherwise stated. I'd be happy to help you frame yours, please request a quote.



In these paintings, time slows, colour lingers, and a lifetime of quiet devotion finds its audience at last.

For availability and acquisitions, please contact Jeanne Hugo.

## *Thank you*

+27(0)603830815



jeanne@hugomodern.art



25 Hofmeyr Street, Welgemoed,  
Cape Town, South Africa



**WWW.HUGOMODERN.ART**